



15th Annual ANTSHE National Conference

"Refreshing Your Past - Downloading Your Future"

Friday, March 23 – Sunday, March 25, 2012

Hosted by Eastern Kentucky University

The 15th Annual National ANTSHE conference is centered on *Refreshing Your Past - Downloading Your Future*. We invite you to join us as we reflect on the many paths our lives have taken us and embark on an exciting new journey as we move forward into the future.

Choose from twelve (12) thought provoking sessions that will provide insights into ways that will inspire you to further develop your leadership skills and provide support to your fellow colleagues. You will be able to participate in a key panel discussion centered on the future of the non-traditional student.

If you are ready to refine your talents and refocus your energy to further your success in the future, then don't miss out on this exceptional and productive conference!

[Click here to register!](#)

Eastern Kentucky University
Carl D. Perkins Conference Center
Kit Carson Drive
Richmond, KY 40475
(859) 622-7686

Agenda

More detailed information to follow

Friday, March 23 rd	Saturday, March 24 th	Sunday, March 25 th
1:00 - 5:00 Exhibitor Display	8:00 - 9:00 Registration	9:00 - 10:00 Panel
1:00 - 5:30 Registration	9:00 - 9:50 Concurrent Session 1	10:15 - 11:30 Keynote Speaker
3:30 - 4:30 Planetarium	10:00 - 10:50 Concurrent Session 2	Awards / Closing
5:30 - 6:45 Welcome	11:00 - 11:50 Concurrent Session 3	Business Meeting
Keynote Speaker	12:00 - 1:15 Catered Lunch	
	1:30 - 2:20 Concurrent Session 4	
	2:30 - 3:20 Concurrent Session 5	
	3:30 - 4:20 Concurrent Session 6	
	4:30 - 5:00 Door Prizes / Silent Auction in lobby	
	6:30 - 8:30 Mystery Dinner at Stratton Bldg.	

ANTSHE Membership

[Join or Renew your ANTSHE Membership](#)
and lower your conference registration fee!

Join ANTSHE today and gain access to exclusive content not seen here. New members have access within 24hrs of payment. Use the member only section to reach other nontraditional student members and collaborate and learn from each other!

Call for Proposals

The Association for Non-Traditional Students in Higher Education (ANTSHE) invites academic professionals, administrators, and nontraditional student leaders to submit proposals for presentations at the 2012 conference. The call for proposals will open on October 3, 2011 and will run through December 9, 2011. All proposals will be reviewed and individuals chosen to present will be contacted on or before December 20, 2011.

If selected, you will be asked to present your topic once in the morning and once in the afternoon. This will increase the opportunity for attendees to listen to your presentation. Also you will need to provide your presentation that is compatible with Microsoft Office on a flash drive.

Selected presenters will be required to register and pay to attend the conference.

Please submit proposals via <http://soto.eku.edu/antshe/cp>

Accommodations

These hotels provide easy access to the conference and are only minutes away. Make your reservations today.

Exit #87: These hotels provide breakfast. (rates subject to change).

Directions: Turn right at stop light traveling east on the Eastern bypass for one mile. Turn right onto Lancaster Avenue (Highway 52). Turn left at the very next stop light onto Kit Carson Drive. The Perkins Conference Center is the large red brick building on your left. Park in the lot at the west end of Perkins (no permit required).

[Hampton Inn](#) - Call (859) 626-1002 to register. Group Name: ANTSHE for rate of \$87.30 per night (plus applicable taxes/additional guest)

[Holiday Inn Express](#) - Call (800) 315-2621 to register. Rate of \$99.00 per night (plus applicable taxes/additional guest)

[Comfort Suites](#) - Call (859) 624-0770 to register. Group Name: ANTSHE for rate of \$89.99 (plus applicable taxes/additional guest)

[Jameson Inn](#) - Call (859) 623-0063 to register. Rate of \$59.00 (plus applicable taxes)

Directions

From Lexington, KY

Take I-75 south and travel approximately 23 miles to Richmond and depart interstate at exit #87 (2nd Richmond exit). Make a left and cross over the interstate, traveling east on the Eastern bypass for one mile. Turn right onto Lancaster Avenue (Highway 52). Turn left at the very next stop light onto Kit Carson Drive. The Perkins Conference Center is the large red brick building on your left. Park in the lot at the west end of Perkins (no permit required).

From Louisville, KY

Louisville is approximately 86 miles to Richmond. Take I-64 east to I-75/I-64 split. Continue south on I-75 Richmond/Knoxville. Depart interstate at exit #87 (2nd Richmond exit). Make a left and cross over the interstate, traveling east on the Eastern bypass for one mile. Turn right onto Lancaster Avenue (Highway 52). Turn left at the very next stop light onto Kit Carson Drive. The Perkins Conference Center is the large red brick building on your left. Park in the lot at the west end of Perkins (no permit required).

From Bowling Green, KY

Bowling Green is approximately 175 miles to Richmond. Take I-65 north to exit #43 (Glasgow) and travel east on the Cumberland Parkway through Somerset to exit #41 on I-75. Travel north on I-75 for approximately 48 miles departing the interstate at exit #87 (2nd Richmond exit). Turn right at the end of the off ramp and travel east on the Eastern bypass for one mile. Turn right onto Lancaster Avenue (Highway 52). Turn left at the very next stop light onto Kit Carson Drive. The Perkins Conference Center is the large red brick building on your left. Park in the lot at the west end of Perkins (no permit required).

From Cincinnati, OH

Cincinnati is approximately 97 miles to Richmond. Take I-75 south to Lexington. Continue south on I-75 Richmond/Knoxville. Depart interstate at exit #87 (2nd Richmond exit). Make a left and cross over the interstate, traveling east on the Eastern bypass for one mile. Turn right onto Lancaster Avenue (Highway 52). Turn left at the very next stop light onto Kit Carson Drive. The Perkins Conference Center is the large red brick building on your left. Park in the lot at the west end of Perkins (no permit required).

From Huntington, WV

Huntington is approximately 130 miles to Richmond. Take I-64 west for 104 miles to exit #96 (Fort Boonesborough State Park) and remain on State Highway 627 until intersecting I-75 at exit #95. Travel south on I-75 and depart interstate at exit #87 (2nd Richmond exit). Make a left and cross over the interstate, traveling east on the Eastern bypass for one mile. Turn right onto Lancaster Avenue (Highway 52). Turn left at the very next stop light onto Kit Carson Drive. The Perkins Conference Center is the large red brick building on your left. Park in the lot at the west end of Perkins (no permit required).

From Knoxville, TN

Knoxville is approximately 150 miles to Richmond. Take I-75 north and depart the interstate at exit #87 (2nd Richmond exit). Turn right at the end of the off ramp and travel east on the Eastern bypass for one mile. Turn right onto Lancaster Avenue (Highway 52). Turn left at the very next stop light onto Kit Carson Drive. The Perkins Conference Center is the large red brick building on your left. Park in the lot at the west end of Perkins (no permit required).

Ground Transportation

Getting to and from Blue Grass Airport is simple and convenient! If you are in need of transportation, there are rental cars, taxicabs, limousines, shuttles, and hotel courtesy vans at your disposal.

KY River Foothills Express

KY River Foothills is offering shuttle service to/from Blue Grass Airport and the Carl D. Perkins Conference Center at a special round trip rate. For more information contact: David Sowder, 800.819.7083 or 859.624.3236

Rental Car Services

Rental car service counters are located in the baggage claim area on the first level of the terminal. The airport's spacious rental car facility provides a central pick-up and drop-off location for car rentals. Located directly next to the terminal, the rental car facility is covered so travelers are protected from inclement weather. For car reservations, please contact the rental car agencies directly.

Avis Rent-A-Car: 800.230.4898

Budget Car Rental (off-site): 800.527.0700

Enterprise Rent-A-Car: 800.261.7331

Hertz Rent-A-Car: 800.654.3131

National Car Rental: 800.227.7368

Shuttle, Taxi and Limousine Service

Taxis are available outside the terminal by the baggage claim exit. Below is a listing of taxi companies that provide service departing from the Blue Grass Airport. Meters typically begin at \$2.50, with fares running approximately \$2.50 per mile, valid for up to four individuals. *(Pricing is subject to change. Please contact the individual taxi company for additional information.)*

Cornett's Airport Shuttle: 859.797.5151

Mr. Taxi: 859.223.8888

Wildcat Taxi: 859.225.2227

Yellow Cab: 859.231.8294

Gold Shield Limousine Service: 859.255.6388

Triple Crown Limousine: 859.252.6764

Refund and Cancellation Policy

Refunds for registration fee, less **\$25** cancellation fee per registrant will be available if you cancel before 5:00 p.m. Friday, March 2, 2012. No refund will be given after that date. Cancellations must be received in writing only via email: EKUantshe@gmail.com

No refunds will be made for No Shows or if you are unable to attend, so please send someone in your place. Provide your replacement information to by sending an email to: EKUantshe@gmail.com

Become a Conference Sponsor

Our event brings together dozens of decision-makers from colleges and universities across the nation. You can't afford to miss the opportunity to sponsor the 15th Annual ANTSHE National Conference, where you can network with them all. If you are interested in becoming a sponsor, please complete the [Sponsors Commitment Form](#).

Vendors

You do not want to miss this opportunity to become meet and introduce your organization to ANTSHE members. As a vendor you will a booth space to promote your organization and, depending on the package selected, conference meals and program advertising. If you are unable to attend the conference but would like to place promotional information or items in the Conference Welcome Bag, you may choose the Economy Package. If you are interested in being a vendor, please complete the [Vendor Commitment Form](#).

For non-profit organization, you may choose to receive a 50 percent package discount, if you are willing to provide an item for our Silent Auction (minimum \$50 value).

Student Volunteers

Are you looking for ways to connect with others, increase self-confidence, gain career experience, build job skills, and have fun! Then volunteering to assistance in the success of the 15th Annual National ANTSHE (Association of Non-Traditional Students in Higher Education) scheduled on March 23-25 is right for you.

A national conference is a major undertaking and EKV is seeking students from all universities/colleges to be:

- Moderators (examples: announcing speakers prior to each session, distributing and collecting surveys)
- Conference staff (examples: assisting with registration, providing direction to conference rooms, answering general questions concerning the conference)

Positions will be filled by the end of January, so hurry before all positions are filled and complete the [volunteer form](#)!

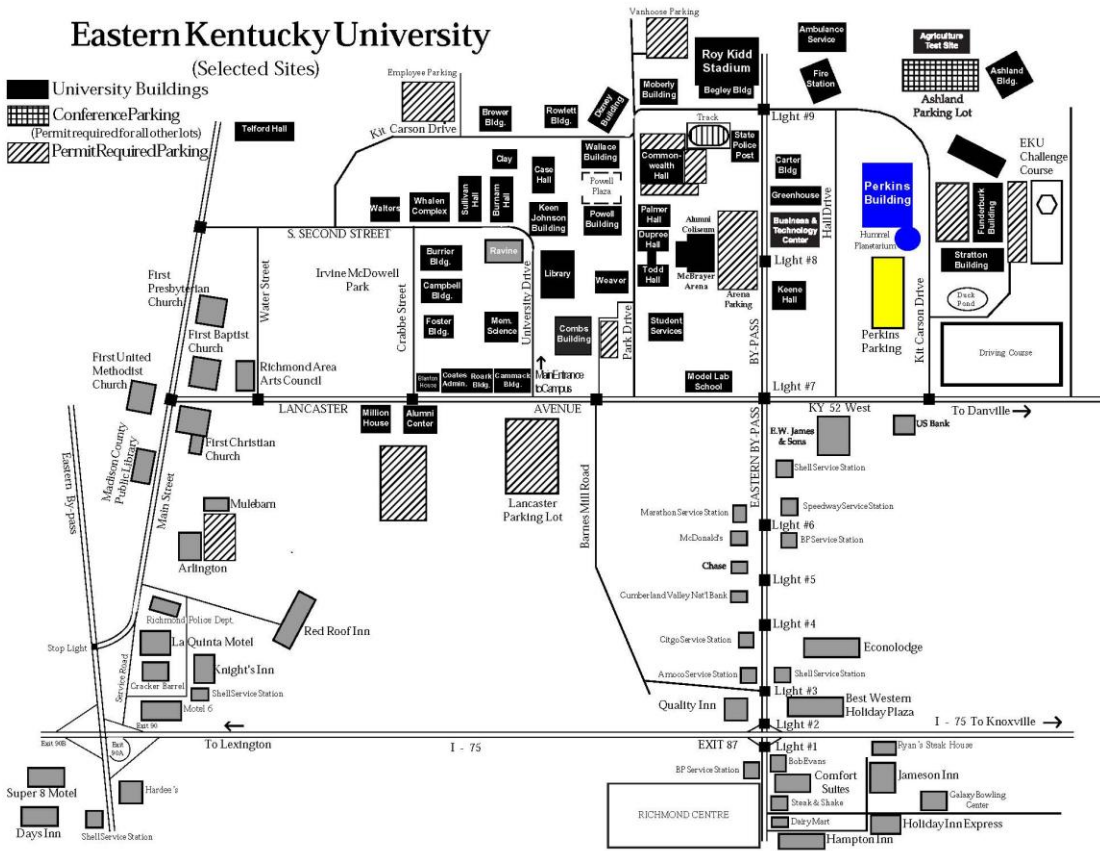
Conference Services

Eastern Kentucky University
Student Outreach and Transition Office
521 Lancaster Avenue
CPO 72, SSB 442
Richmond, KY 40475
(859) 622-7686

Eastern Kentucky University

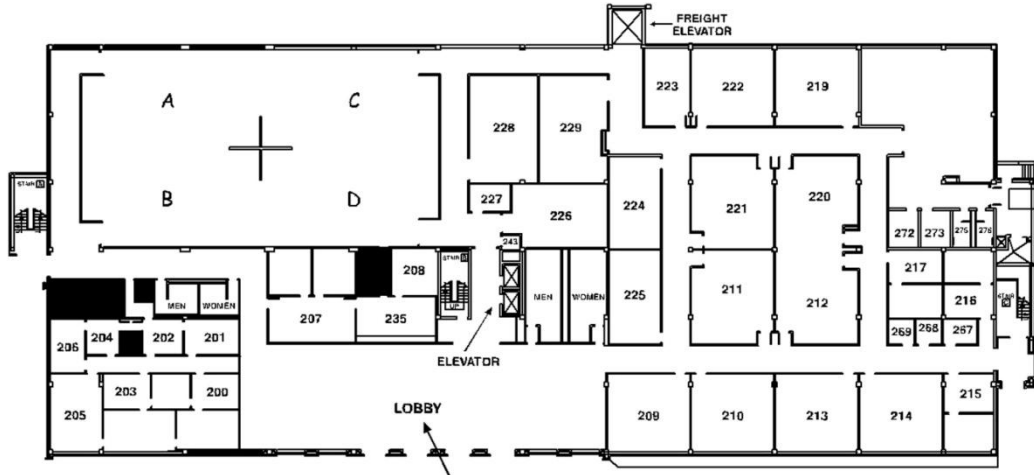
(Selected Sites)

-  University Buildings
-  Conference Parking
(Permit required for all other lots)
-  Permit Required Parking





WELCOME TO THE PERKINS CONFERENCE CENTER



YOU ARE HERE

CARL D. PERKINS BUILDING - SECOND LEVEL